

COMPASS

A report from
THE GREAT LAKES ST. LAWRENCE
GOVERNORS & PREMIERS



CHAIR'S LETTER

The Great Lakes St. Lawrence region is at the heart of North America's agricultural and manufacturing economy. Traditional commodities and new products and services are in demand around the world. We are working to support these sectors and improve connections with global markets.

Regionally, we are re-energizing our maritime transportation system as a way to deliver goods to global industries and consumers. Major investments like the new Soo Locks, which includes hands-free mooring and other technologies that improve safety and efficiency, are critically important. In Wisconsin, we are similarly investing in our maritime system. Wisconsin's Harbor Assistance Program awarded over \$9 million to six different projects, including \$3 million toward the \$36 million agricultural maritime export facility at Port Milwaukee. All things agriculture will come into this new port—expected to top 400,000 metric tons.

Supporting our region's exporters is a priority. GSGP manages sixteen export promotion offices that connect our region's small and medium sized companies with prospective business partners in key foreign markets. Upcoming trade missions will visit Japan, South Korea and Central America.

In my state, I recently signed legislation that allows the Department of Agriculture, Trade, and Consumer Protection to work with the Wisconsin Economic Development Corporation. It also creates a new agricultural exports program that is expected to increase Wisconsin's dairy, meat, crop and other exports by 25% by 2026.



Our region's farmers, manufacturers and businesses are the cornerstones of our economy. We look forward to our continued work together.

Tony Evers

Chair, Great Lakes St. Lawrence Governors & Premiers

Governor, State of Wisconsin

CRUISE THE GREAT LAKES ANNOUNCES SUSTAINABILITY PLEDGE

Cruise the Great Lakes (CTGL) recently announced a pledge to promote environmentally conscious cruising and destination stewardship efforts starting with the 2022 cruising season. Through this pledge, CTGL members and partners commit to working together to promote and implement environmentally friendly and sustainable cruising practices. **The sustainability pledge includes four focus areas: Destination Stewardship, Air Emissions & Carbon Reduction, Wastewater, and Recycling.**

Great Lakes cruises are unique in both experience and impact. Because vessel size is limited by the St. Lawrence Seaway locks, the ships are small and provide a more intimate guest experience. The largest cruise vessels in operation on the Great Lakes can hold a maximum of 400 passengers, with an average size of fewer than 200. Oceangoing cruise ships, by contrast, carry an average of 3000 passengers, or 15 times more than those cruising the Great Lakes.

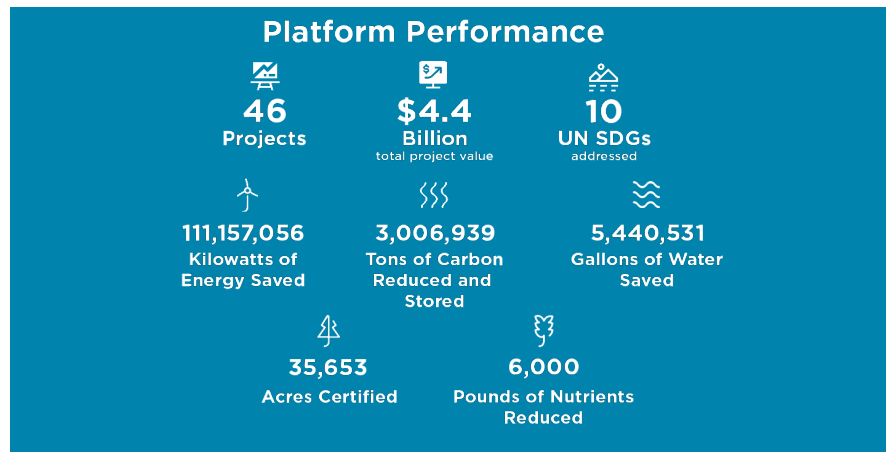


[The CTGL Sustainability Pledge is available here.](#)

IMPACT INVESTMENT

PLATFORM DRIVES REGIONAL IMPACT

The Great Lakes Impact Investment Platform recently announced the environmental performance of its participating projects. Collectively, the projects are reducing 3 million tons of carbon, protecting more than 30,000 acres of forest and farmland, saving 110 million kilowatts of energy, saving 5.4 million gallons of water, and reducing 6,000 pounds of nutrients. This captures the total environmental performance of those projects. Projects can report their annual or lifetime performance. Overall, the Platform features 46 projects representing more than US\$4.4 billion in economic value.



The Great Lakes St. Lawrence region is emerging as a global hub for nature-based impact investment, powered by the Great Lakes Impact Investment Platform. Carbon projects are in their relative infancy in the region but hold substantial growth potential due to abundant forests, farmlands, and other natural resources. The Platform features forest carbon projects in [Illinois](#), [Ohio](#) and [Pennsylvania](#) that will collectively generate about 50,000 carbon credits. In addition, these projects create important co-benefits by improving groundwater recharge, protecting habitat and biodiversity, and providing recreational access. ✨

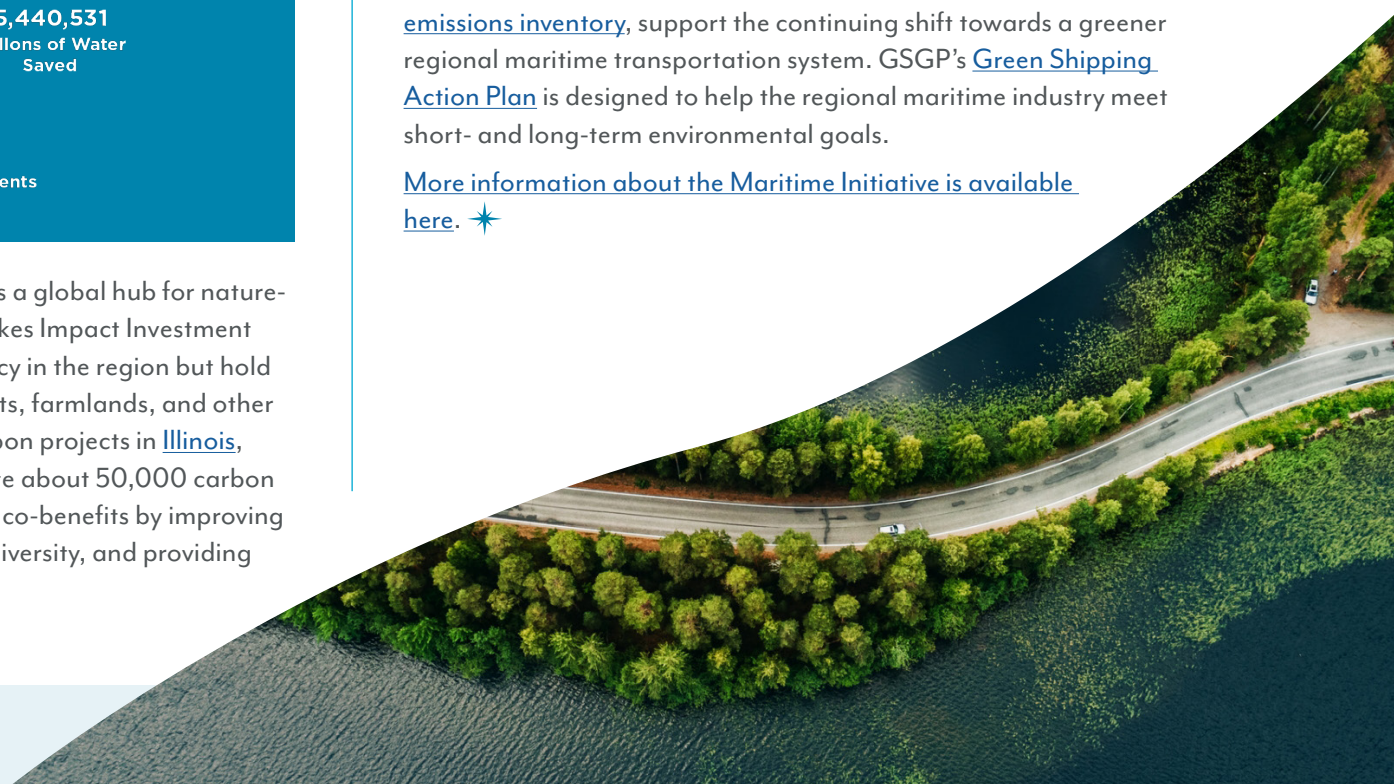
MARITIME

GREENING THE REGION'S MARITIME SYSTEM

GSGP continues to work to improve environmental performance in the Great Lakes St. Lawrence maritime system. The University of Michigan [Ross School of Business Energy Club](#) recently completed [analysis on the economic drivers of marine biofuel adoption](#). For the next phase of analysis, GSGP is partnering with [Innovation Maritime](#) to research regional biofuel supply. These projects, along with the recent survey of [regional port electrification](#) and the first [annual vessel emissions inventory](#), support the continuing shift towards a greener regional maritime transportation system. GSGP's [Green Shipping Action Plan](#) is designed to help the regional maritime industry meet short- and long-term environmental goals.



[More information about the Maritime Initiative is available here.](#) ✨



INTERNATIONAL TRADE

GSGP TO LEAD CENTRAL AMERICA TRADE MISSION

GSGP understands the importance of face-to-face meetings for international business. [Join our trade mission to Costa Rica and the Dominican Republic from September 12-16, 2022.](#) GSGP's Trade Office in Central America will arrange individual, customized meeting schedules for participating companies to meet with pre-screened and qualified partners and end users in both countries.

Costa Rica and the Dominican Republic have strong trade relationships with the US and Canada. US-based exporters benefit from the CAFTA-DR Free Trade Agreement that includes both Costa Rica and the Dominican Republic. Canada has a free trade

agreement with Costa Rica. The US was the top exporter of goods to both countries in 2020.

Grant funding to offset participation and travel costs is available in many of GSGP's



member States. [More information on the GSGP International Trade Program can be found here.](#) ✨

WATER MANAGEMENT

REGIONAL BODY AND COMPACT COUNCIL TO HOST IAGLR SESSION

The Regional Body and Compact Council will host a session at the International Association for Great Lakes Research (IAGLR) conference on May 16 in Grand Rapids, Michigan. GSGP Deputy Director Peter Johnson will present the regional [Science Strategy](#) and the importance of aligning scientific research with regional priorities.

The Science Strategy ensures that strong scientific information provides the basis for cooperative decision making across the Great Lakes St. Lawrence basin. Water conservation and efficient

use is the current focus area.

In addition, the Regional Body and Compact Council began work on a comprehensive cumulative impact assessment. Completed every five years, this assessment focuses on the overall water budget and the impacts of human withdrawals, as well as the effects of climate change.

More information including announcements of upcoming meetings can be found on the [Regional Body](#) and [Compact Council](#) websites.

GREAT LAKES
ST. LAWRENCE
GOVERNORS
& PREMIERS



MEMBERS

Tony Evers,
Chair, Governor of
Wisconsin

Mike DeWine,
Vice Chair, Governor
of Ohio

Doug Ford,
Premier of Ontario

Kathy Hochul,
Governor of New York

Eric Holcomb,
Governor of Indiana

François Legault,
Premier of Québec

JB Pritzker,
Governor of Illinois

Tim Walz,
Governor of Minnesota

Gretchen Whitmer,
Governor of Michigan

Tom Wolf,
Governor of
Pennsylvania

STAFF

David Naftzger,
Executive Director

Peter Johnson,
Deputy Director

Zoë Munro,
Program Director

Mike Piskur,
Program Manager

John Schmidt,
Program Manager

